

## FIREPLACE KIT SYSTEM FROM BRUNNER



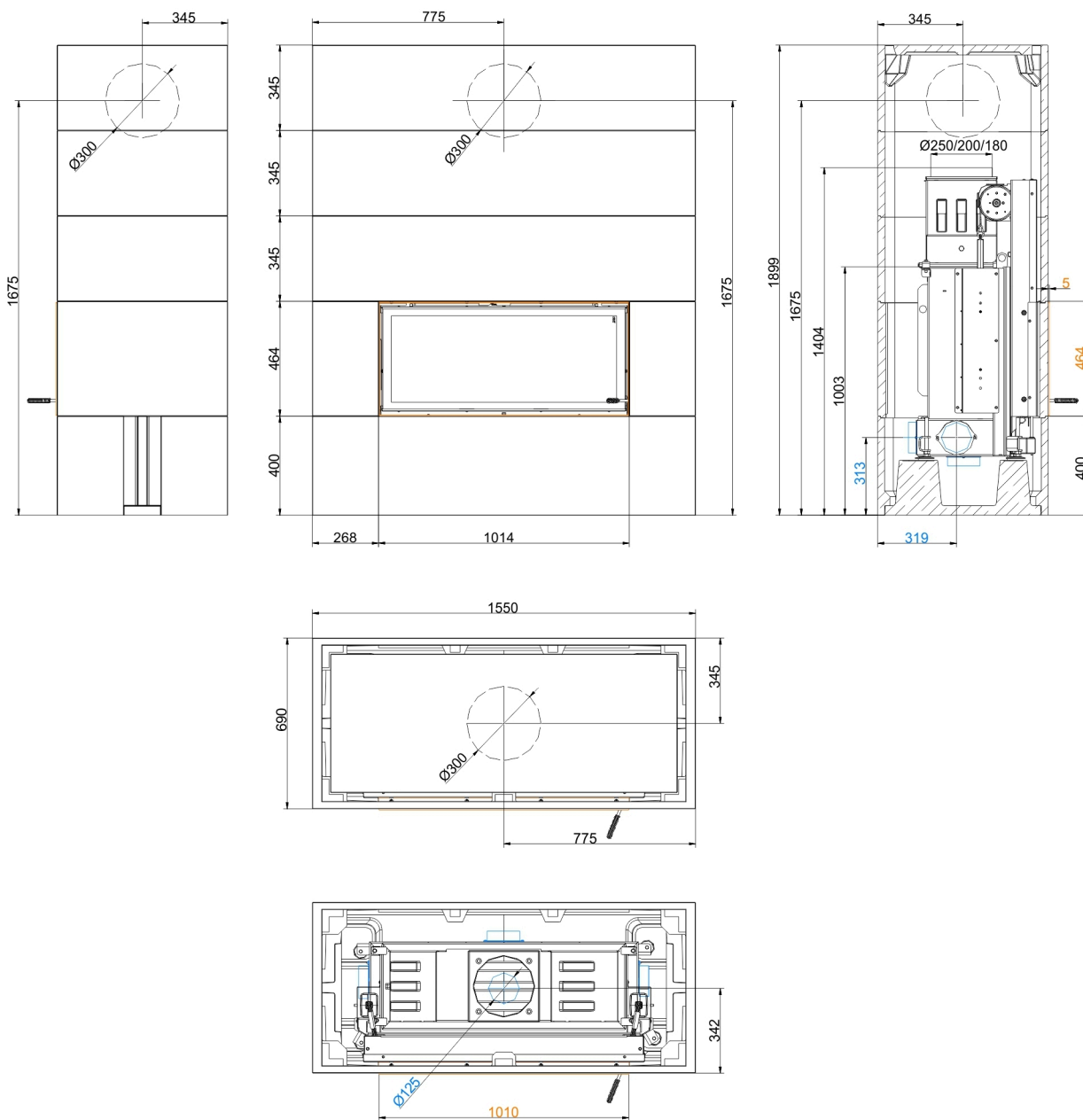
### BSK 06 with Architektur 45/101

State: 2023-08-28



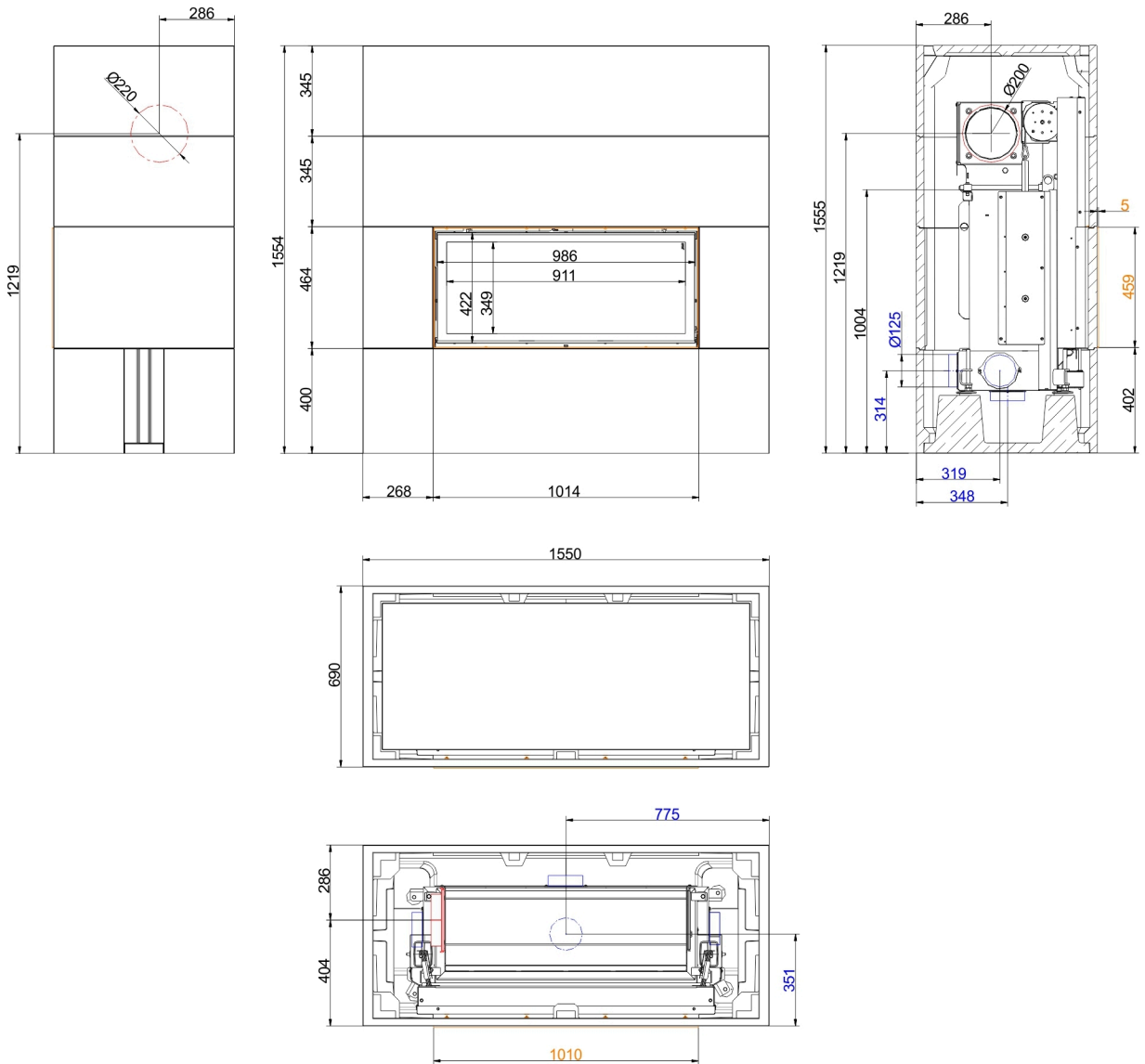
**BRUNNER**<sup>®</sup>  
*made in germany.*

# Dimension sheets - BSK 06 with Architektur 45/101



... with hot air convection top, vertical outlet

# Dimension sheets - BSK 06 with Architektur 45/101



... with hot air convection top side outlet

We suggest for CAD planning Palette CAD. Permanent updated drawings: [www.brunner.de](http://www.brunner.de)

Frames/ flue gas outlet connection/ combustion air supply connection/ front variants/ support bearing are marked in color.

# Planning and installation - BSK 06 with Architektur 45/101

Tested according to	EN 13229	
<b>Data for functional demonstration</b>		
Rated heat power	kW	14
Fire wood volume	kg/h	4.3
Flue gas mass flow	g/s	16
Flue gas temperature	°C	220
Necessary supply pressure <sup>1)</sup>	Pa	12
Combustion air consumption	m <sup>3</sup> /h	40
Combustion air connection Ø	mm	125
<b>Cladding components <sup>2)</sup></b>		
Foot print (W x D)	mm	1550 x 690
Overall height	mm	1899
Height of extension ring	mm	345
<b>Minimal distances</b>		
to mounting wall	cm	5
to mounting wall with heat protection panels	cm	0
to combustible mounting wall	cm	10
to combustible mounting wall with heat protection panels	cm	5
from top of fireplace to ceiling	cm	50
<b>Cross-section of gratings <sup>3)</sup></b>		
Convection air	cm <sup>2</sup>	1035
Supply air	cm <sup>2</sup>	811
<b>Weight</b>		
Total weight	kg	872
<b>Meets requirement/limit values for:</b>		
Germany/ Austria / Switzerland / Norway	1.BImSchV (Stufe 2) / 15a BvG (2015) / LRV / -	

- 1) Damper flap recommended
- 2) Quality features of the cladding components in concrete look (fair-faced concrete class 2-3)

#### **Dimensional tolerances of the casting mold parts**

Straightness: +- 2 mm/m

Length/width/thickness: +- 2 mm

Squareness: +- 2 mm

Flatness: +- 2,5 mm

#### **Surface to visible side**

Textur: closed and largely uniform; repair areas with color changes and hairline cracks permissible.

Porosity: max. three holes with diameter <10 mm and depth <10 mm (reference area 100x100 mm).

Colour shade: uniform, large-area light/dark discolouration and cement haze permissible; no rust and dirt spots as well as different bulk layers.

**Note:** deviations in color tone (e.g. extension rings) can be adjusted by applying a glaze-like paint (our recommendation: DecoLasur Matt tinted in the colour shade Schiefer16, Caparol).

With the BRUNNER revision set (Art. No. 900300), touch-up work can be carried out on the cladding components.

- 3) Existing convection air openings. If the construction differs from the supplied system kit (e.g. construction up to the ceiling or closed construction), the information in the data sheet is decisive for carrying out the cross section of the convection air openings.